



University of
BRISTOL

STUDY ABROAD GUIDE 2023/24



WELCOME TO BRISTOL

8TH

Bristol is the 8th largest city in the UK*, located in the south-west of England just 90 minutes from London.



*When defined by Primary Urban Area, centreforcities.org 2022



CONTENTS

- 2 Introduction
- 4 Study Abroad programmes
- 5 Subject options
- 6 Create your programme
- 8 A vibrant city
- 10 City life
- 12 Student life
- 14 Accommodation
- 16 Fees and funding
- 18 How to apply
- 20 Global summer schools
- 21 Contact us

Autumn semester

September 2023 – January 2024

Spring semester

January 2024 – June 2024

Full academic year

September 2023 – June 2024

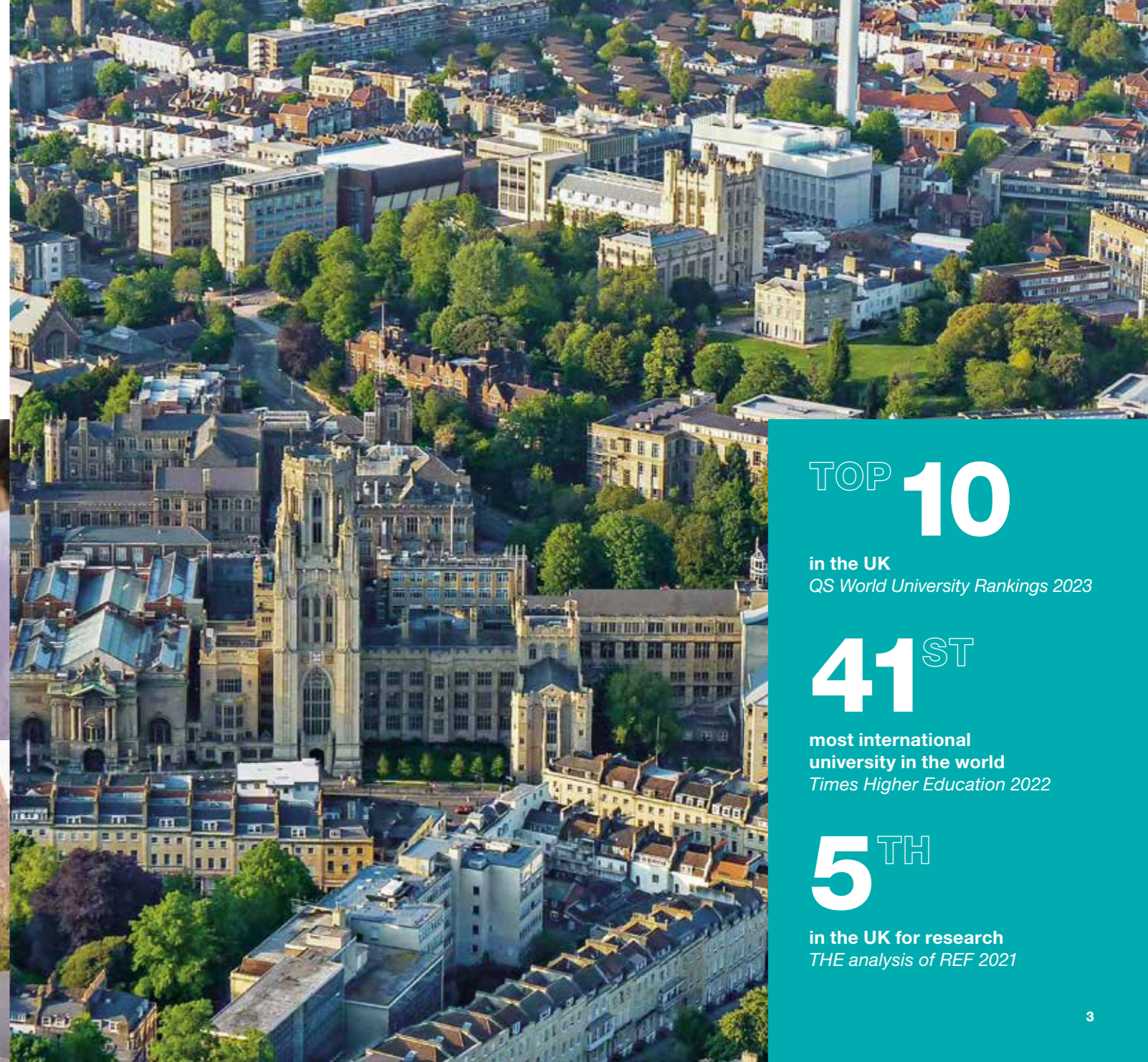
The dates above are indicative and the exact dates will be released on our website: bristol.ac.uk/study-abroad-dates

INTRODUCING THE UNIVERSITY OF BRISTOL

The University of Bristol is one of the most popular and highly ranked universities in the UK, with a diverse community of nearly 30,000 talented students from more than 150 countries.

Here, you'll experience outstanding teaching shaped by our cutting-edge research, and learn from academics at the forefront of their fields.

Living and studying at the heart of Bristol, one of Europe's most exciting, creative cities, you'll find a world of opportunities right outside the lecture theatre.



TOP 10

in the UK
QS World University Rankings 2023

41ST

most international
university in the world
Times Higher Education 2022

5TH

in the UK for research
THE analysis of REF 2021

STUDY ABROAD PROGRAMMES

Bristol offers a highly flexible and personalised Study Abroad experience, with different programmes to suit your English language ability and a wide range of academic fields. All our programmes are available for a single semester or a full academic year.

Study Abroad (General pathway)

September and January start

You can choose units from across the University to create a personalised academic programme. You can take units in your major and minor, as well as other subjects that interest you. Our six faculties offer a wide variety of subjects, which can be combined to create a diverse and intellectually stimulating programme.

Study Abroad (Subject pathway)

September and January start

You will be nominated by your home university to a department at Bristol which best matches your current degree programme. You will take the majority of your units in your host department, with the option to take a small number of credits in other academic areas of interest, including our Centre for Academic Language and Development.

STABEL (Study Abroad with English Language)

September start

For students who don't currently meet the English language requirements for the Study Abroad (General pathway) or Study Abroad (Subject pathway), STABEL combines Study Abroad with a pre-session English language course starting in June or July. This intensive course can last from six to ten weeks, depending on your current English language level, designed to help you reach the required level to progress onto the Study Abroad (General pathway) or Study Abroad (Subject pathway) programme in September. You must pass the pre-session course in order to progress.

The most common options for native English speakers, or those who already meet our English language requirements, are Study Abroad (General pathway) and Study Abroad (Subject pathway). If you already meet our English language requirements but want to enhance your English language skills for academic purposes, you can also take English language units alongside your other subjects.

If you are applying to Bristol as an exchange student, you can check with your home university or the Global Opportunities team at Bristol to find out which programme you have been nominated to. Direct-enrol students and independent applicants can select the most relevant pathway for their English language proficiency and subject preferences.

English language and academic requirements

For full details of the English language and academic requirements for each programme, please visit our website:

bristol.ac.uk/study-abroad-requirements



To watch our Study Abroad film scan the QR code or visit bristol.ac.uk/study-abroad-apply

SUBJECT OPTIONS



Find out more at bristol.ac.uk/study-abroad-units

Arts

- Anthropology and Archaeology
- English Language
- Film and TV
- Innovation
- Modern Languages
- Music
- Philosophy
- Theatre



Engineering*

- Aerospace Engineering
- Civil Engineering
- Computer Science**
- Electrical and Electronic Engineering
- Engineering Mathematics
- Mechanical Engineering



Humanities

- Classics and Ancient History
- English Literature
- History
- History of Art
- Religion and Theology



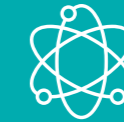
Science

- Chemistry***
- Earth Sciences
- Geographical Sciences
- Mathematics
- Physics



Life Sciences

- Anatomy
- Biochemistry
- Biological Sciences
- Cellular and Molecular Medicine
- Neuroscience
- Pharmacology
- Physiology
- Psychology



Social Sciences

- Accounting and Finance
- Economics
- Education
- Law***
- Management
- Policy Studies
- Politics and International Studies
- Sociology



*We strongly advise Engineering students to apply for a year-long placement, as many of our Engineering units are taught across the full academic year

**Available for final-year Computer Science majors only

***Available for full-year students only

CREATE YOUR PROGRAMME

Make the most of your time here by creating a tailored academic programme that works for you.

Study level

Undergraduate degrees in the UK are three-year programmes, and as a Study Abroad student you can choose units (classes) from all three years. Occasionally, some departments open up master's level units for Study Abroad students. You can check the full list of available units for each department in our online study guides.

bristol.ac.uk/study-abroad-units

For subjects that are new to you or that you haven't studied in-depth at home, first-year units are the most suitable. Second-year units are the most common for students taking their major/minor abroad, and third-year units are suitable for students in their major subject if they are close to graduation.

Credits and course load

You will take 60 Bristol credits per semester, which is a full course load. Most units at Bristol are worth either 10 credits or 20 credits, so you will typically take three to six units per semester.

Science and Engineering subjects tend to have more 10-credit units, whereas Arts, Humanities and Social Sciences tend to have 20-credit units. Your home university will be able to advise you on how the credits transfer back to your degree.

Finding your units

Study Abroad (Subject pathway) students are required to take the majority of their units in the department to which they are nominated by their home university. Study Abroad (General pathway) students can take units across different faculties.

The terminology used at Bristol might not exactly match what you are used to at your home university. Please read the guidance on our website about how to choose your units.

bristol.ac.uk/study-abroad-guidance



'Coming to the UK was my childhood dream. When arriving in Bristol I was impressed by its diversity of students, the content of my lectures and its beautiful architecture.'

Ayu, Waseda University

A VIBRANT CITY

Named one of the UK's top 3 creative and cultural cities*, Bristol is a diverse, vibrant place that will quickly feel like home.

At the heart of the city

Our campus is located near the centre of Bristol and offers outstanding facilities, including nine libraries with dedicated study spaces, a swimming pool and sports centre.

Our excellent teaching and learning facilities include:

- Our cutting-edge Life Sciences Building which features one of the largest teaching labs in the UK.
- Hack Space, a creative area for engineering students to experiment, collaborate and test new ideas.
- One of the best-equipped studio theatres at any UK university.

Best of both worlds

A short walk from campus will take you into the heart of the city centre. Situated in south-west England, just 90 minutes from London, Bristol offers hundreds of years of history to explore. It is a lively, bustling city that's also packed with green spaces. The beautiful British countryside and coast are easy to reach by bus, bike or car.

*European Commission, 2019/20



'My first impressions of Bristol have stayed true to my beliefs. Bristol is very green, there are always people to hang out with, and the campus is beautiful.'

Katherine, University of Wisconsin Madison



Clifton Village:
Enjoy a stroll through the Georgian arcades and picturesque squares of **Clifton Village**. A top spot for café culture, this neighbourhood is home to the world-famous **Clifton Suspension Bridge**.

🕒 20 minutes

Brandon Hill:
Cabot Tower sits at the summit of **Brandon Hill**. There are great views from the top overlooking this green haven, which is just a short walk from our main campus.

🕒 10 minutes

University of Bristol Clifton Campus:
Our main campus lines the leafy streets of Clifton and includes libraries and study spaces, our newly renovated **Indoor Sports Centre** and the colourful **Royal Fort Gardens**.

Wills Memorial Building:
The impressive **Wills Memorial Building** at the top of Park Street marks the entrance to our campus.

🕒 5 minutes

Harbourside:
Bristol's **Harbourside** bustles with lively bars, restaurants, museums and attractions, and is a focal point for festivals and markets all year round.

🕒 15 minutes

Temple Quarter Enterprise Campus ➔

We are developing a new world-leading campus in the heart of the city of Bristol. Dedicated to collaboration and discovery, teaching and research will focus on digital, business and social innovation.

🕒 30 minutes

🕒 **Approximate walking times from the Clifton campus**

CITY LIFE

Experience something different in Bristol. There's always something to do, and you can discover the best of British culture from day to night.

More parks and green spaces than any other UK city



Find more images of student life in our city
[@universityofbristol](#)



A city of famous festivals



A vibrant and quirky city to explore



World-class music venues



Discover cultural gems at museums and art galleries



Renowned for food and drink



Exciting events all year round

STUDENT LIFE



'I have met many people across Bristol especially through the International Students' Network, Global Lounge and the SU Loft.'

Jimena, Universidad Carlos III de Madrid

Global Lounge

The Global Lounge is a multicultural hub that celebrates all cultures. On arrival, the team will help you to settle in, offering you practical support and the chance to meet other students. Situated in the heart of campus, the Global Lounge is a place for all Study Abroad, other international and UK students to connect and learn from each other. It has a communal atmosphere, encouraged through a variety of fun and social events, such as a weekly Language Café.

bristol.ac.uk/global-lounge

Global Opportunities team

While you are studying at Bristol, the Global Opportunities team is your first point of contact. We are here to support you with any concerns you have, academic or personal. We also have a student-facing space in the Global Lounge so you can drop in at any time without making an appointment.



With our outstanding facilities, active Students' Union and extensive support network, at Bristol you can enjoy the best of student life.

Get involved

Every student at the University of Bristol is a member of the Students' Union (SU). Led by students, for students, Bristol SU is a vital part of our world-class university experience.

The SU organises events, represents your views, and runs more than 350 clubs and societies for different interests and hobbies.

You will also be able to join the International Students' Network, which hosts events, runs campaigns and represents international students. Joining a club is a great way to meet new people while you're here, and Study Abroad students often say taking part really helps them settle in and make friends.

Sports, exercise and health

Bristol's first-class sports and fitness facilities on campus will help you start or maintain a healthy and active lifestyle during your time here.

Our memberships give you access to our gym, fitness classes, studios and swimming pool. You can also play sport socially or competitively by joining one of 70 student sport clubs. If you play sport professionally, you can also develop with our performance team.

Health and wellbeing

Bristol's holistic approach to wellbeing will support you to realise your full potential. Our comprehensive network of resources and student services are ready to support you if and when you need it. You can use our online Request Support form to contact our services.

- Our Student Wellbeing and Residential Life teams are friendly and approachable, providing you with advice and coordinating the right support for you.
- The Student Counselling Service provides confidential, high-quality, short-term, individual and small-group counselling.
- We have a full NHS (National Health Service) doctor's surgery on campus for students who live in the local area.
- Other services include our Multifaith Chaplaincy, Disability Services and extensive online resources.

Your space on campus

There are plenty of places around the University to relax, socialise and get support. The SU Living Room provides a dedicated space to relax and meet friends – right at the heart of the campus.



Find out more at bristol.ac.uk/study-abroad-life

ACCOMMODATION

Our accommodation is a safe and supportive environment where you can be part of our vibrant student community.

Your accommodation

Our University accommodation is grouped into three Student Residential Villages: North, East, and West.

We offer a range of self-catered and half-board accommodation. Our self-catered residences have kitchen facilities so you can cook your own meals, and our half-board residences have dining halls which provide two meals a day. All rooms are furnished, with either an en suite or a shared bathroom, and every residence provides free internet and 24-hour security.

You will be living with a mix of British undergraduates (usually first years), international students, and other Study Abroad students. We have accommodation options to suit everyone, including some designated flats for students with specific living requirements, such as single-sex and alcohol-free flats. Accommodation is also available for students with disabilities or health needs.



'I have met new people through my University accommodation. Having new flat mates has allowed me to introduce myself.'

Felipe, Pontificia Universidad Católica de Chile

Support in your accommodation

Our Residential Life Service offers a support network for students living in University accommodation. Each Student Residential Village has a Residential Life team, who are trained support staff. They are there to give you expert help, support and advice, 24 hours a day, seven days a week.

Private rented accommodation

Private rented accommodation is best suited to students coming to Bristol for the full academic year, as most rental contracts are for a minimum of nine months. The University's Accommodation Office can provide advice and guidance on finding private rented accommodation. Bristol SU also provides a specialist letting service for students, and there are many other property providers across the city.

Social life and sports

Each University residence has a social committee run by students, which organises a range of social events, fun activities, and sporting leagues, for all abilities. Students living in University accommodation can also get fit for free through the fantastic B:Active Residences programme.



Find out more at bristol.ac.uk/accommodation

Study Abroad accommodation guarantee

- Direct enrol (non-exchange) students for September or January entry are guaranteed an offer of a place in University accommodation if you apply by the deadline.
- Exchange students from institutions outside of Europe are guaranteed an offer for September entry, if you apply by the deadline. We cannot guarantee an offer for January entry students, but we aim to place as many students as possible in a University residence or support you in finding private accommodation.
- Exchange students from our European partners are not guaranteed an offer for September or January entry but are still welcome to apply. If we cannot provide a place in a University residence we will support you in finding private accommodation.



East Residential Village

The East Village residences are based in and around Bristol's city centre. These residences are within walking distance of the University campus, and benefit from an endless supply of shops, cafés, and bars. Nearby is Bristol's vibrant Harbourside, which hosts many festivals and events and is a popular area for nights out.



West Residential Village

Our West Village residences are mostly based in the Clifton area – a popular and picturesque suburb of Bristol known for its traditional architecture, café culture and green spaces. Clifton offers a mixed selection of busy shopping and nightlife as well as quiet residential areas. These residences are mostly around 15 minutes' walk from the main University campus.



North Residential Village

Our North Village residences are based in the Stoke Bishop area – two miles from the main campus. The village includes gardens and space for socialising. It houses many half-board residences near to the sports complex. There is a dedicated bus service which links the North Village with the main campus and city centre. You are given a bus pass which is included as part of your accommodation fee.



Find the right accommodation for you by watching our student guides to each Residential Village.

Scan the QR code to find your village, or visit bristol.ac.uk/accommodation-videos

FEES AND FUNDING

Tuition fees

If you are nominated to Bristol through an exchange partnership you will not need to pay tuition fees. Students who apply independently or as a direct-enrol applicant will pay Study Abroad tuition fees. If you are unsure which category applies to you, please speak to your home university for further guidance.

2023/24 tuition fees

Study Abroad (General pathway) and Study Abroad (Subject pathway)

- Full year: £19,500
- One semester: £9,750

Study Abroad with English Language (STABEL)

- Six weeks: £3,130 + Study Abroad tuition fee
- Ten weeks: £5,120 + Study Abroad tuition fee

Tuition fees will be paid once you arrive, and full-year students can pay in instalments. You should check with your home Study Abroad office and/or programme provider regarding the payment of fees to the University of Bristol. Your home institution may have a special agreement with us to pay the fees on your behalf.

Study Abroad students are often able to apply for scholarships in their home country to support their programme costs when they go abroad to study. Scholarships that former students have applied for include:

- BUTEX Scholarships, which are worth £500 and are for students studying abroad for a semester or an academic year.
- German Academic Exchange Service (DAAD), which provides eligible German students funding towards Study Abroad costs.
- Lånekassen, which provides eligible Norwegian students supplementary tuition fee grants.



Find out more at
bristol.ac.uk/study-abroad-fees

Accommodation

Accommodation fees vary, but the information below will give you a good idea of cost.

Typical accommodation fees

Self-catered	Per week
Shared room	£100 to £110
Single room	£116 to £171
En suite room	£161 to £199
Catered	Per week
Shared room	£157 to £160
Single room	£186 to £203
En suite room	£206 to £213

Typical accommodation fees based on 2021/22 figures for University allocated accommodation. Figures rounded to the nearest pound.

Accommodation fees include all gas, electricity and water costs, internet, bus pass, insurance, and a Social Fund contribution.

Private rents vary according to your preferences. For a room in a shared residential property, you could pay between £350 and £550 or more in monthly rent, not including your bills.

Studios in commercial properties can be up to £1,000 per month, although this does include bills and internet.

Living costs

The cost of living in Bristol will vary depending on your lifestyle. The information below may give you an idea of what to budget for.

Expense	Typical annual cost
Food	£1,250 for self-catered or private accommodation; £911 for catered (in addition to two daily meals included in rent)
Clothes and toiletries	£700
Entertainment	£1,500 for sports pass, entertainment, additional activities and travel costs

You can live well in Bristol for much less than in London; the cost of living is around 18 percent cheaper than in the capital (numbeo.com, June 2022). As Bristol is a student city, many shops, restaurants and venues offer a student discount.

See our website for more information about typical living costs.
bristol.ac.uk/living-expenses

HOW TO APPLY

Our simple online forms make it easy to apply for our Study Abroad programmes.



Please see your programme page online to apply
bristol.ac.uk/study-abroad-apply

1 Complete an application form on your chosen pathway page.

2 Have your application and unit choices approved by an academic advisor or Study Abroad advisor at your home university.

3 Email your signed application form, along with copies of your supporting documents to global-opportunities@bristol.ac.uk

Entry requirements

Academic requirements

You must meet all of these conditions:

- You are currently enrolled in a higher education institution and studying towards a bachelor's degree.
- You have completed at least one year of study at university level by the start of your Bristol studies. If you're studying towards a four-year bachelor's degree, we strongly recommend that you have completed at least two years of study.
- You have a strong 'B' average or 3.0 Grade Point Average (GPA).

English language requirements

You must meet one of the following conditions:

- English is your native language.
- English is the language you are taught in at your home university. If you think this applies to you, please contact global-opportunities@bristol.ac.uk to confirm whether you need to provide any additional evidence as part of your application.
- You can provide proof that you meet the English language requirements for your Study Abroad programme. The full list of requirements and accepted English language certificates is available on our website. bristol.ac.uk/study-abroad-requirements

Student Visa

If you do not hold a UK/Irish passport and will be studying at Bristol for more than six months, you must apply for a Student Visa. We will send you a CAS (Confirmation of Acceptance for Studies) around three months before the start of your programme. You will need the number on your CAS to apply for your visa.

Non-UK/Irish passport holders studying at Bristol for only one semester must obtain a Standard Visitor Visa. Some nationalities can receive this visa at the UK border, but others will need to obtain it in advance of travel. You can check whether you need to apply in advance here: www.gov.uk/check-uk-visa

Our Student Visa team can support you at every stage before you arrive and while you are with us. Please refer to our website for up-to-date information. bristol.ac.uk/visas

'Studying at Bristol was very new for me. Coming to England and discovering a new education system was really interesting. The teachers are very attentive and listen to what you are saying.'

Elise, Université de Genève

GLOBAL SUMMER SCHOOLS

Our taught and research-based summer schools offer exciting short-term experiences across a range of disciplines.

Providing hands-on, immersive, and career-ready experiences, these programmes are a great alternative to spending a semester or year abroad. Our summer schools emphasise practical skills. You will learn in small groups and engage with our wider community through co-curricular sessions.

In 2023 we will offer summer schools across the following topics:

- Arts, Activism and Social Justice
- Biomedical Sciences
- Environmental Humanities
- Field Archaeology
- Shakespeare in Performance
- STEM Research Projects (from our Health Science, Life Sciences, and Science faculties).

Starting from £2,795, our summer schools include academic credit and transcripts as well as a complete pastoral support and leisure programme to help you explore the city of Bristol and this vibrant region of the UK. They are open to students at any stage of their undergraduate degree.

For application information and eligibility requirements, contact the summer school team: global-summer@bristol.ac.uk bristol.ac.uk/global-summer

*Please note our summer school offerings are subject to change.



CONTACT US

The Global Opportunities team is dedicated to supporting Study Abroad students throughout their time at Bristol.

From your initial enquiry to generating your transcript when you have completed your studies, we are here to help with any questions.

We look forward to hearing from you.

Email
global-opportunities@bristol.ac.uk

Telephone
+44 (0)117 394 0207



Find out more at:
bristol.ac.uk/study-abroad

If you need all or part of this publication in an alternative format please contact us: **tel +44 (0)117 394 1649** or email **marketing-team@bristol.ac.uk**

This prospectus contains information for students planning to join the University of Bristol in autumn 2023 and spring 2024. Every effort is made to ensure all details are correct at the time of going to press (June 2022). However, since the information is subject to change you are advised to check the University's website for the latest updates: bristol.ac.uk/study-abroad

University of Bristol Study Abroad guide 2023/24
Design: The Chase Creative Consultants
Photography: Chris Bahn, Dan Rowley, Destination Bristol, Harry McCulloch, Jenny Hooton, Jim Johnston, Jon Jerrome, Liz Eve/Fotohaus, Patrick Metcalfe, We the Curious.

© University of Bristol 2022

Discover Bristol online

Explore university life through our virtual tour,
with 360-degree views of the campus and city:

bristol.ac.uk/virtual-tour

Get connected

Twitter: @BristolUni

Facebook: @bristoluniversity

Instagram: @bristoluni_studyabroad

Weibo: bristol

YouTube: UniversityOfBristol



bristol.ac.uk/study-abroad

